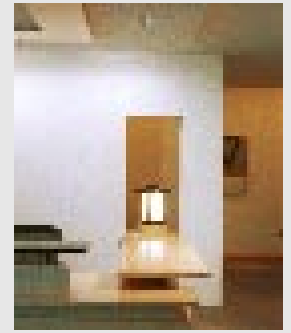
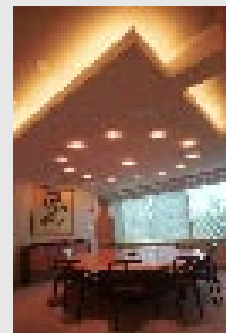
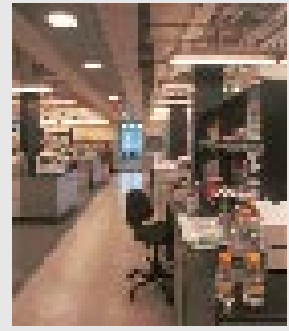
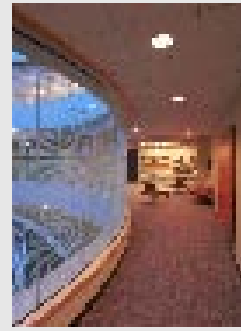
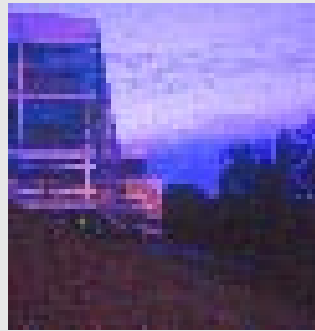


Charlie Walsh's background includes work in the aerospace, equipment manufacturing, and motion picture industries. Since joining Ripman Lighting Consultants in 1999, Charlie's work has encompassed a variety of residential, institutional and commercial projects.

Charlie is currently RLC's project manager for the GTECH Building in Providence, Rhode Island and the Delaware Art Museum

*PRAECIS PHARMACEUTICALS
Waltham, Massachusetts*



Awards

*HARVARD UNIVERSITY MEMORIAL HALL SPIRE (Cambridge, MA)
HARVARD UNIVERSITY MEMORIAL CHURCH (Cambridge, MA)
(Illuminating Engineering Society of North America, 2001)*

*NORTHEASTERN UNIVERSITY BEHRAKIS HALL (Boston, MA)
(Illuminating Engineering Society of North America, 2003)*

HARVARD UNIVERSITY NEW RESEARCH BUILDING (Boston, MA)

*EMERSON MAJESTIC THEATRE (Boston, MA)
(Illuminating Engineering Society of North America, 2004)*

*OLD STATE HOUSE (Boston, MA)
(Illuminating Engineering Society of North America, 2005)*

Education

*NORTHERN ARIZONA UNIVERSITY
Bachelor's Degree in Mechanical Engineering, Summa Cum Laude*

*UNIVERSITY OF NEW HAMPSHIRE
Illumination Engineering*

Member

*ILLUMINATING ENGINEERING SOCIETY
DESIGNER'S LIGHTING FORUM*

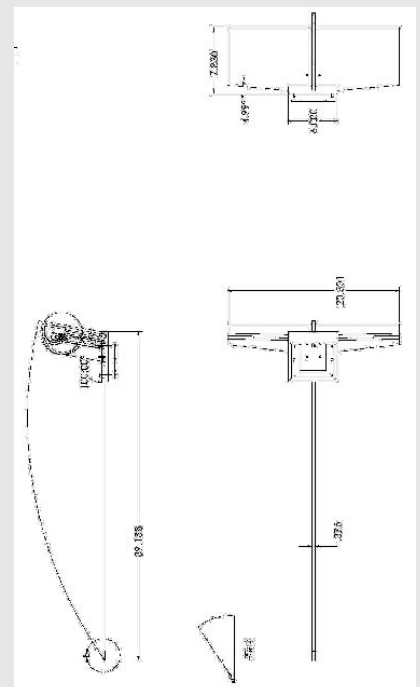
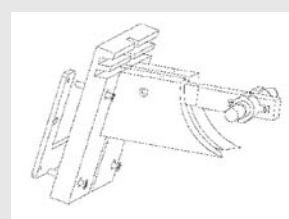
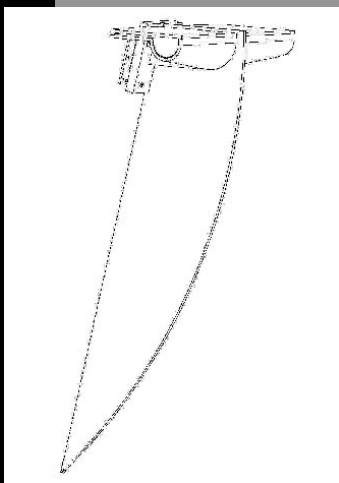
RIPMAN LIGHTING CONSULTANTS

3 LEXINGTON STREET
BELMONT, MA 02478

(617) 489-3366
fax (617) 489-5223
www.ripmanlighting.com



*NEW RESEARCH BUILDING
HARVARD MEDICAL SCHOOL
Boston, Massachusetts*



charlie walsh - project manager

www.ripmanlighting.com